



Photograph by Michael Marzik

***This file presents a digitised version of the following item held by the James Cook University Library Special Collections***

**Title:** Val Russell Sketchbook No. 16  
**Collection:** Library Archives  
**Location of item:** Mabo Library, JCU Townsville campus  
**Access to this file:** <https://nqheritage.jcu.edu.au/732/>

**Description:**

Metal spiral bound sketchbook featuring 18 leaves of pencil drawings and some newspaper clippings.

Dimensions of the item: Height – 270mm, Width - 373mm

**Copyright:**

© Ellen Danaher

[Creative Commons: Attribution Non Commercial No Derivatives 4.0.](#)

**Conditions of use:**

This work is licensed under a Creative Commons Attribution-NonCommercial-NoDerivatives 4.0 International License, which permits the redistribution of the work in its current form for non-commercial purposes, provided the original author and source are credited.

Use of any of the Works contained within the NQHeritage@JCU website for any purpose is subject to the [Copyright, Access & Use Conditions](#).

By using any of the Works, you agree to and are bound by the Copyright, Access & Use Conditions which may attach to the use of the Works.

JCU Library does not warrant that use of this Work will not infringe the rights of third parties, as yet unknown, who may own the rights to this Work.

It is your responsibility to determine and satisfy the copyright and any other restrictions that may apply to this Work.

The Library invites any person who believes that they are copyright owners to contact them to discuss usage of this Work at: [specialcollections@jcu.edu.au](mailto:specialcollections@jcu.edu.au)

For more information on copyright see the [Australian Copyright Council](#) website.

VR/SKB/16

116  
16.



VAL RUSSELL

1975-76

SOUTH JOHNSTONE

PORT DOUGLAS  
ATHERTON  
POVEATY GULLY

PEERAMON

TOLGA RACECOURSE

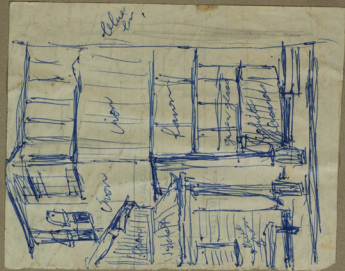
TRINITY BEACH

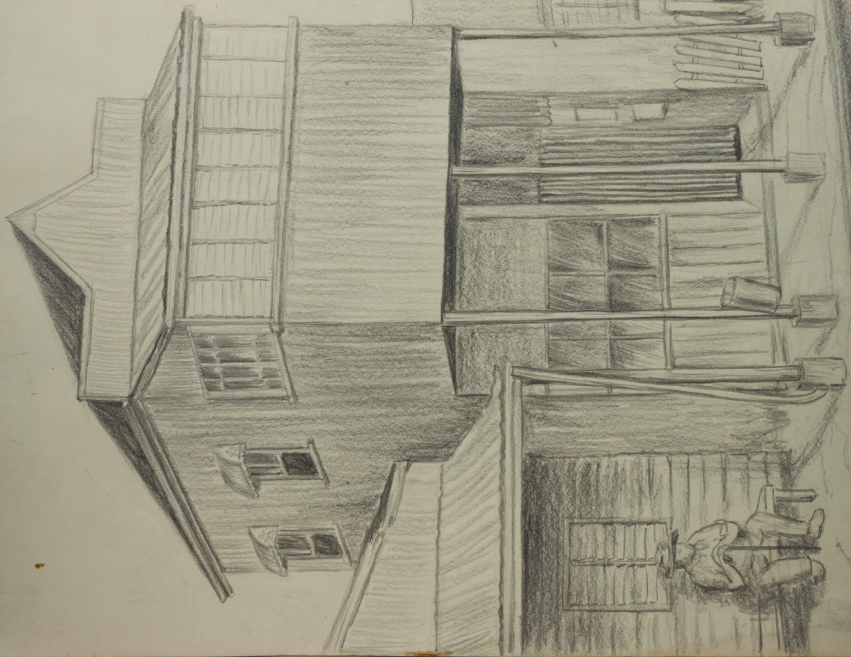


SKETCH PAD

No. 122

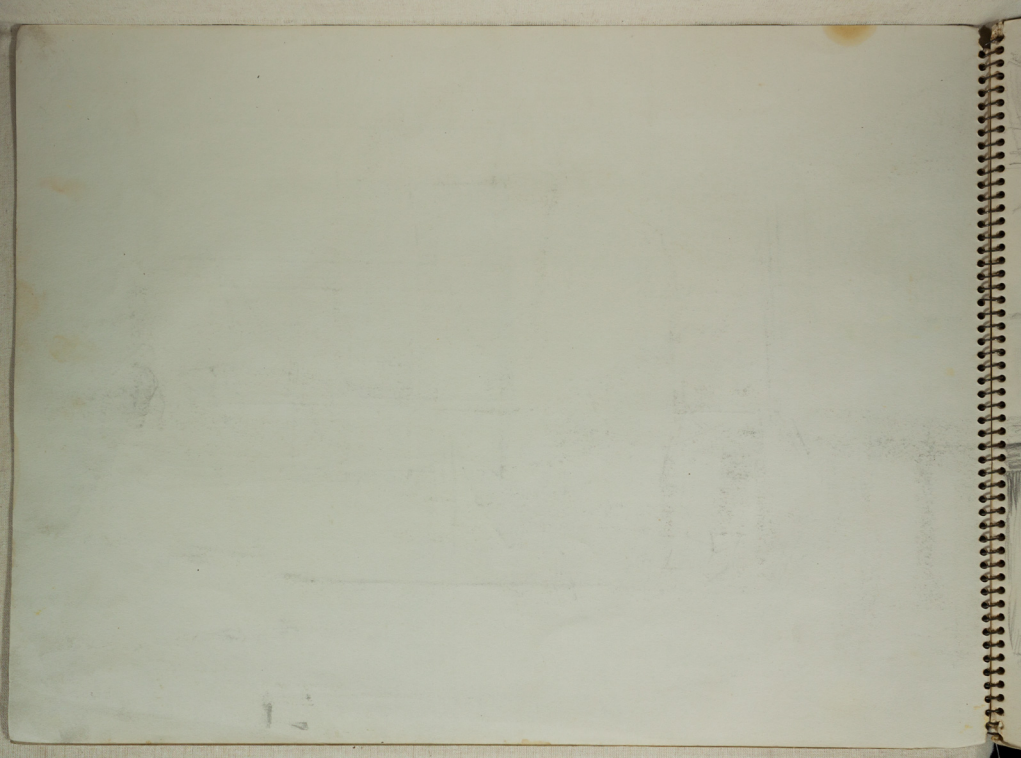


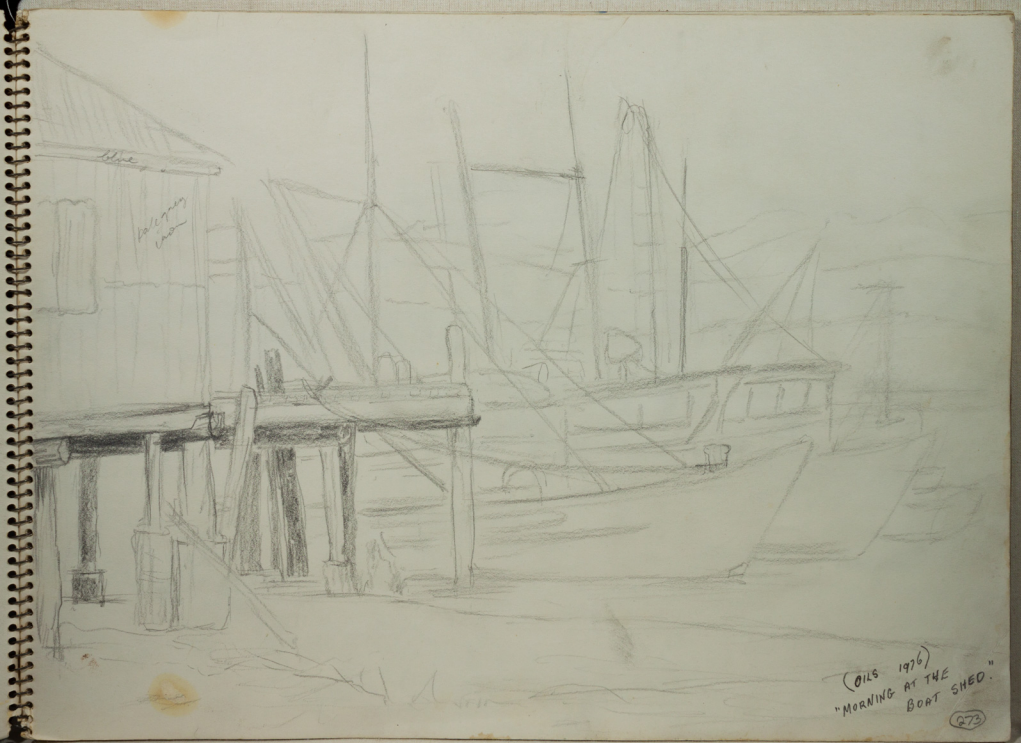




272  
The house was built by the  
family of the late  
S. J. ...

1870-1880  
1916

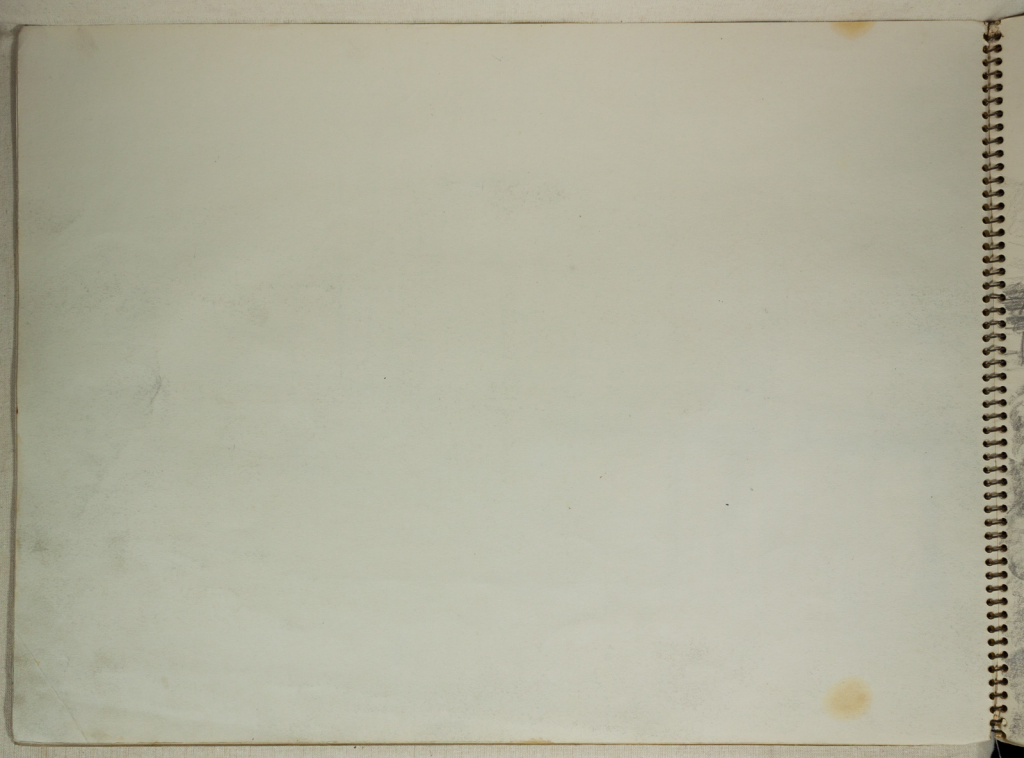




blue  
pale yellow  
iron

(OILS 1976)  
"MORNING AT THE  
BOAT SHED"

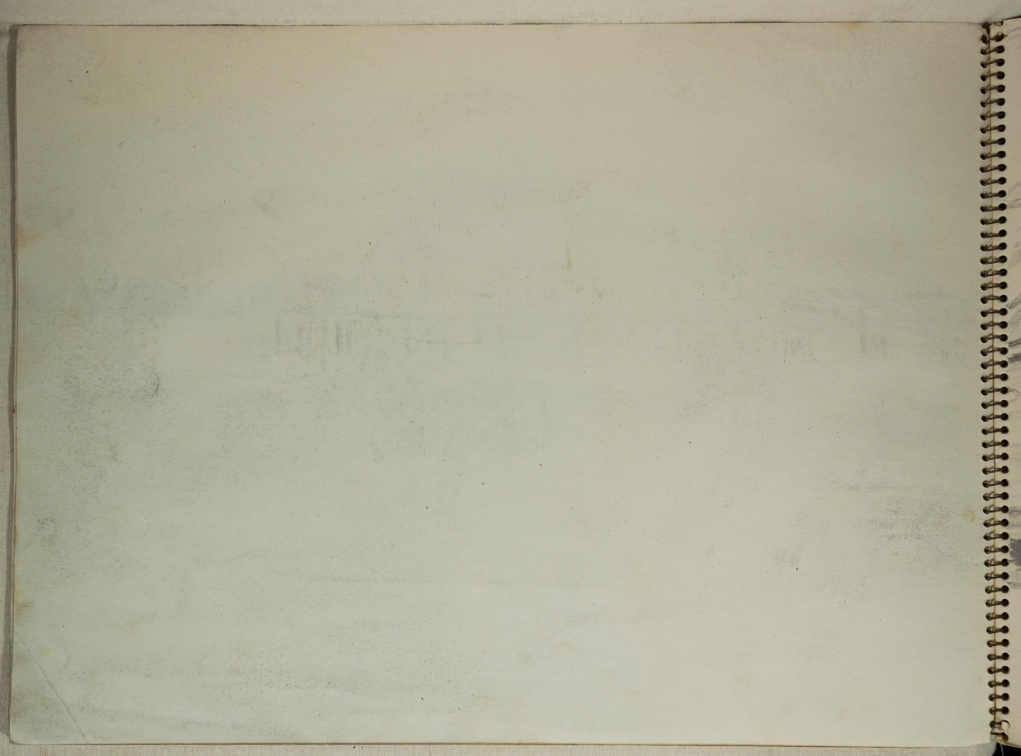
273







FISHERMAN'S WHARF  
PORT DOUGLAS  
Sept. 1975  
(pen + colour wash)  
1976. (214)





also used in  
"Port Douglas assemblage" - o/c 1983

"ABANDONED CHURCH," (INK + COLOUR  
WASH)  
PORT DOUGLAS.

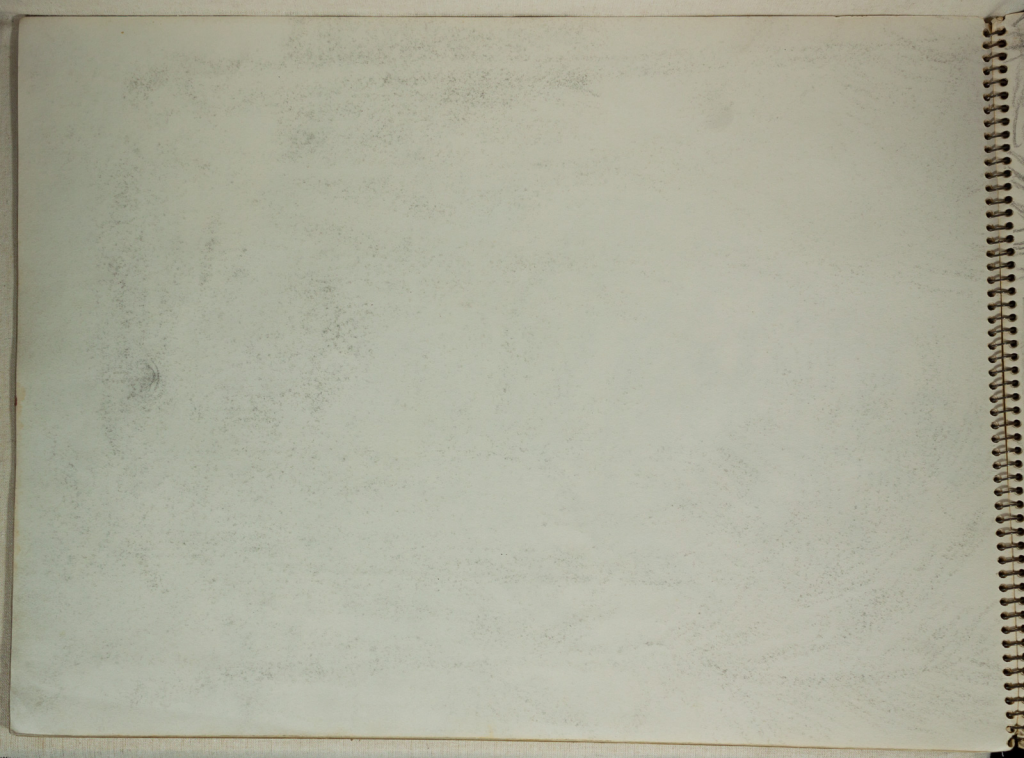
Port 1975. 275

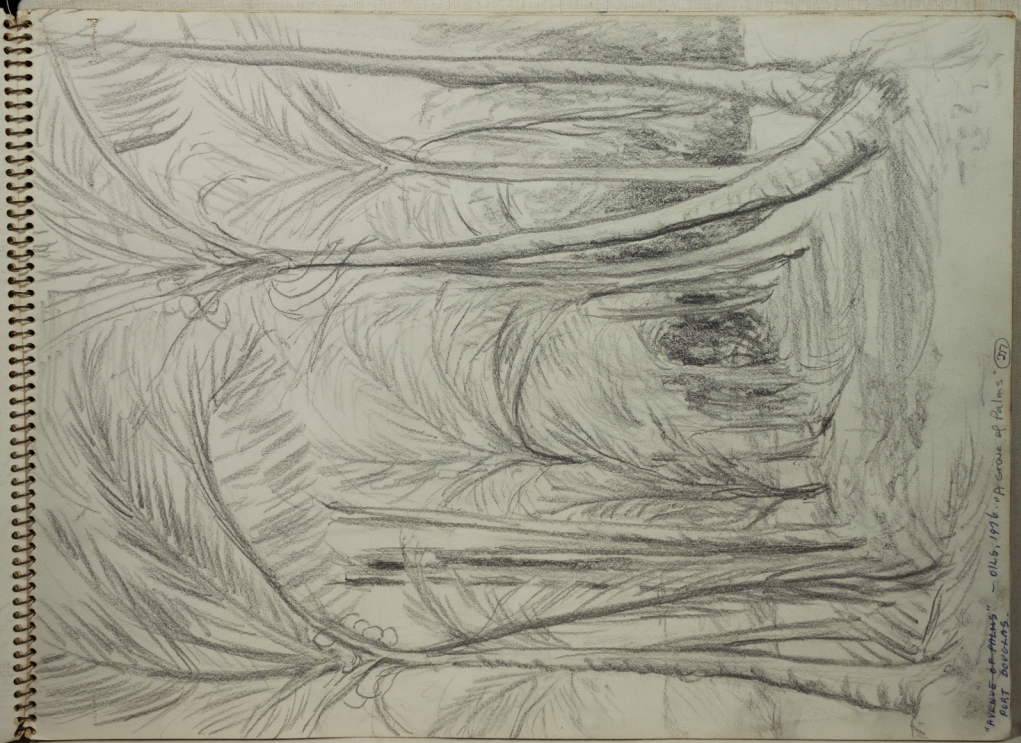




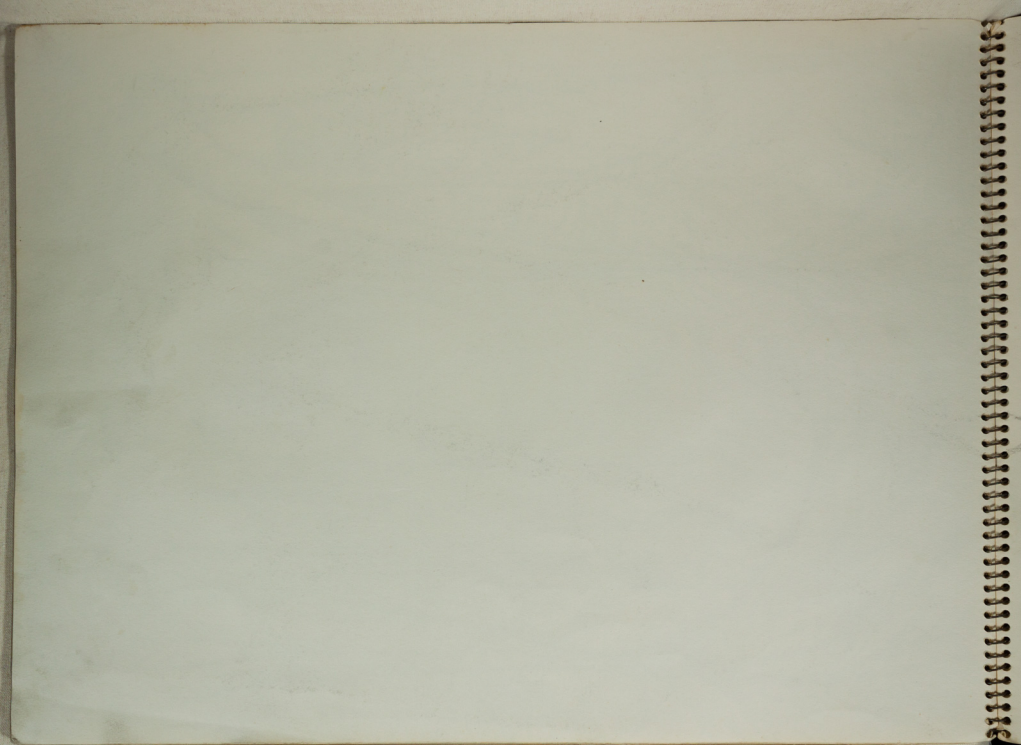
Mr. J. H. C. W. R. N. S.  
P. H. O. G. R. S.  
1875

20





"AVENUE OF TREES" - OILS, 1976. "A Grove of Palms" (27)  
PORT DOUGLAS.







H.R. East Dingle  
1978

"SHEERKS AT  
SUNDOWN" (28)  
— OHS — 1978.



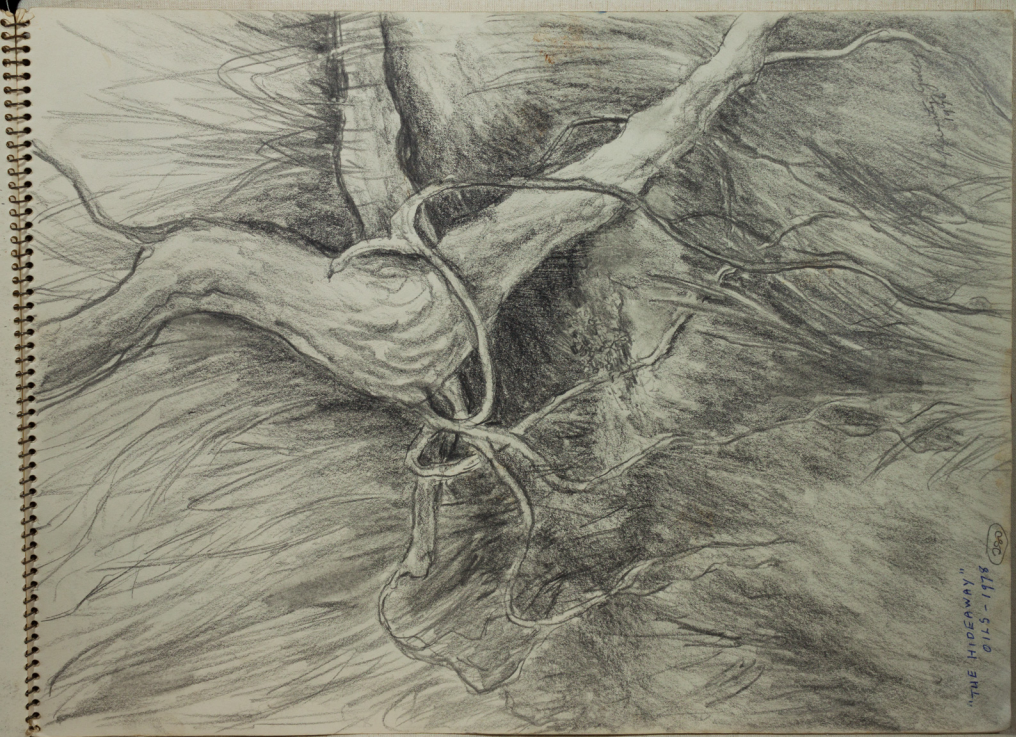


W. J. ...  
1984

land was sold 1988  
1989

"Country Style"  
Country Store, Wash.  
(John ... 1996) 579





"THE HIDEAWAY"  
0115 - 1978

080

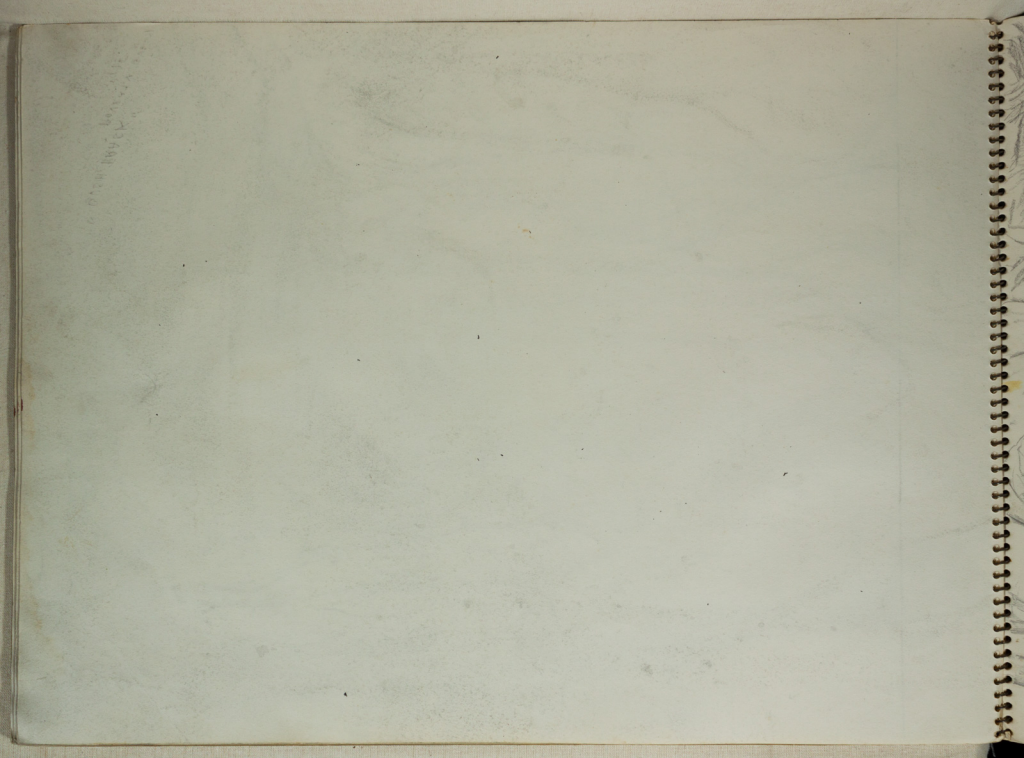




Three Pink Trees by  
Dush Babcock

(24)

"THREE PINK TREES" - 011-1978







"TALL TREES - (2nd)  
A POVERTY GULLY LANDSCAPE"

6.26 - 1978

Atherton Times, Friday, November 14, 1980.



### ● Pubs of the Tablelands

The Peeramon Hotel, built in 1911 is a fine example of one of the oldest pubs built in the settlement era of the Tablelands.

Mine hosts, Tom and Mawn Young, are constantly working to bring it back to its former splendour, and are succeeding admirably.

The timber used in its construction would be worth a fortune these days, being white beech, black bean and oak.

The Hotel lies on a site opposite the position that used to be occupied by the Peeramon Railway Station, now defunct and demolished.

That station had the biggest log loading ramp on the Tablelands, and must have brought on some mighty thirsts.

The locals, and in fact, people from all over the Tablelands, still bring their thirsts here to be assuaged and Tom, with the help of bar attendants Caroline Steele and Pamela Rowe, make a good fist of it.

Peeramon has much to interest the tourist as well as the local with a

thirst for knowledge as well as for good beer.

Just down the road is a paddock, marked on a copy of the old town plan Tom keeps in the pub, that was gazetted as a grazing block for horses used by the local Constabulary. The plan also shows many residential blocks and sites for shops, but the town has now reverted to a quiet country village where people can relax.

Inside the pub, the walls are covered with pieces of harness used by the

horses and wagons that were used for conveyance up to the end of the last war.

When you go there, ask Tom to show you the photo of the end of the wheelbarrow race, (an old Tableland tradition that is still being kept up, although not for such a distance) that took place from Topaz to Peeramon. **It took three days! What a thirst they must have had at the end of that.**

Speaking of thirsts reminds one of what should go with it, and that is food, and you

can't go wrong if you turn up on Friday evening for Tom's smorgasbord, when you can eat sizzling steaks and as much of a variety of salads etc. as you can get into yourself for only \$3.50.

If you feel like a romantic evening, how about, booking for his Candlelight Dinner on Saturday evening, you won't be disappointed with the results - anyhow - from the food that is - but with atmosphere like that, the rest is up to you. Phone 96-7173, but you had better book early.

upstairs walls - very dark green  
"Peeramon Hotel" section mid green.  
white lettering edged in reddish brown  
posts red brown  
alas guttering.  
Downstairs walls light green  
windows doors edged in white  
glass painted brown  
rulings white.  
soil red  
shrubs yellow green

$$\begin{array}{r} 76\frac{1}{2} \times 10\frac{1}{2} \\ + 2 \\ \hline 16\frac{1}{2} \times 12\frac{1}{2} \end{array}$$

### Peeramon Hotel

Built in 1911 of local timbers, white beech, blackbean and oak, the Peeramon Hotel dis-

plays old photographs and artifacts of harness, wagon parts and hand tools. It is the social centre of Peeramon on Friday nights.

The licensee is J. Carse.

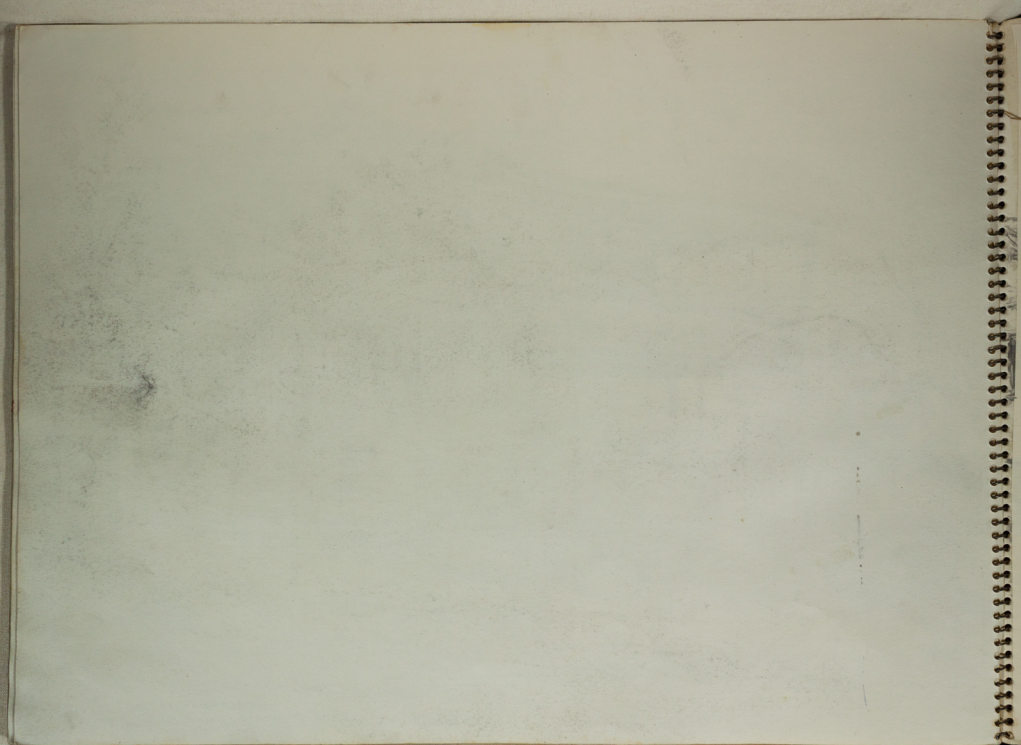


PEERAMON HOTEL

(acrylics - 1981)

"PEERAMON HOTEL"  
(Ink & Col. Wash) 1975

200



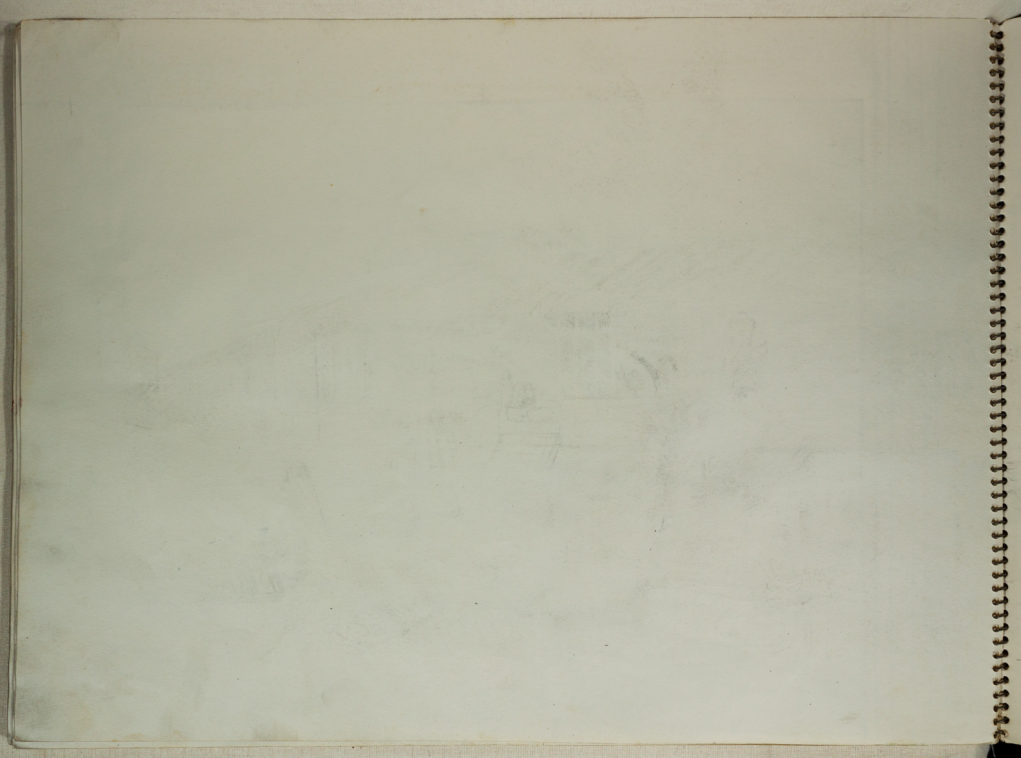


"The Grandstand and  
"St. Murrows  
Park"

ails - 1977.

"Ben Colau  
Walt  
Study Vol. 1978

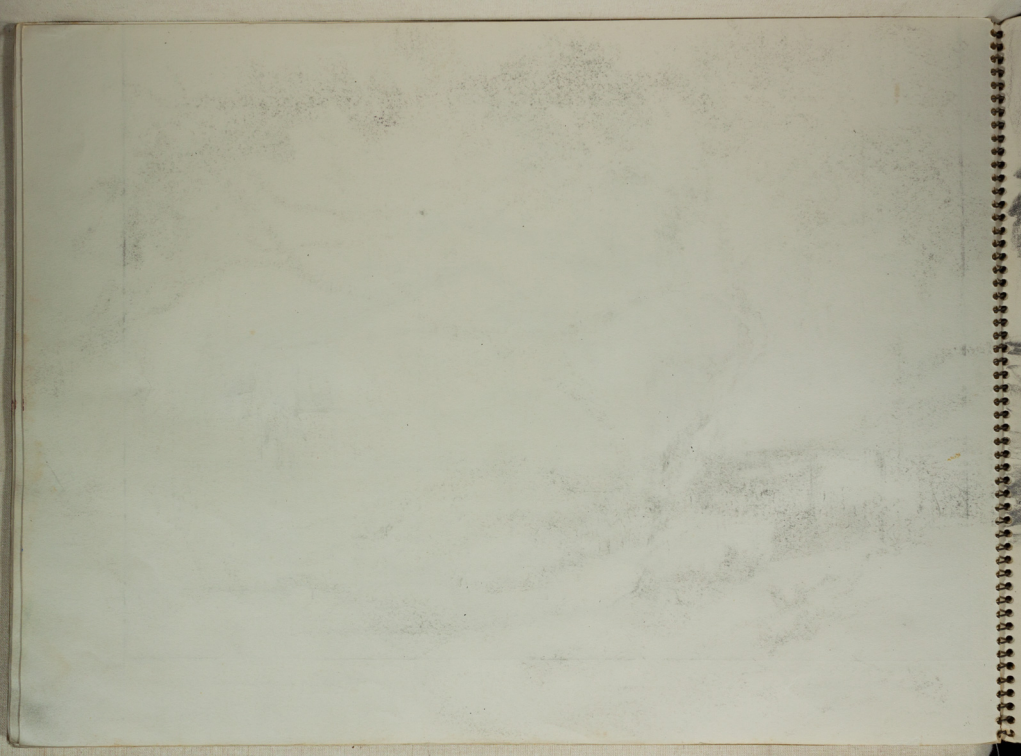
"The Grandstand" -  
New Race Course. 1976.





"AT MORROW PARK" Study No. 2  
Pen & Colour Wash  
1975

At Telga Racecourse - 1976  
285

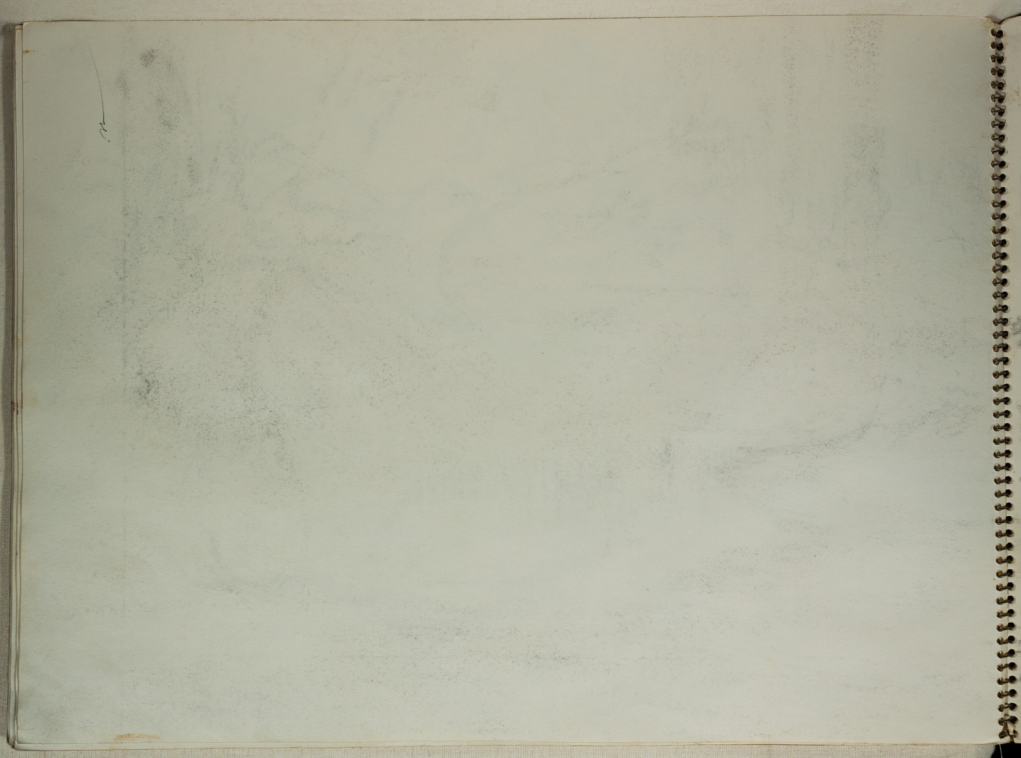






"TWISTED TREE"  
- TRINITY BEACH.

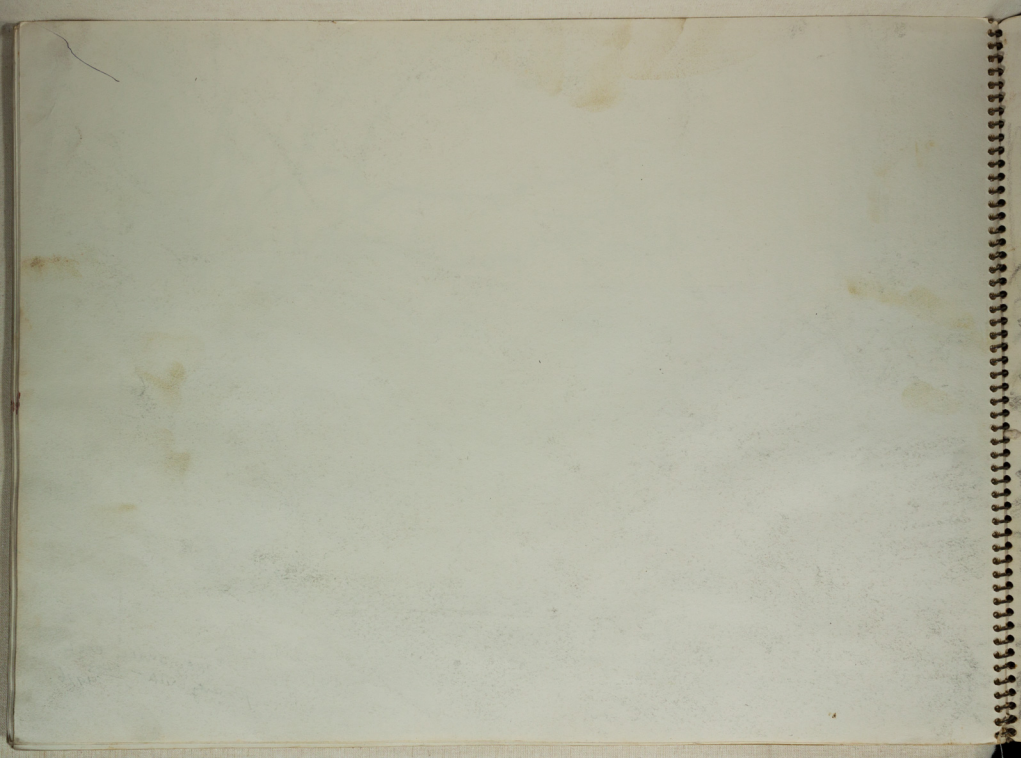
OILS-1996 (285)





"THE SMALL POOL"  
Powers Creek - 0123  
1976

(157)

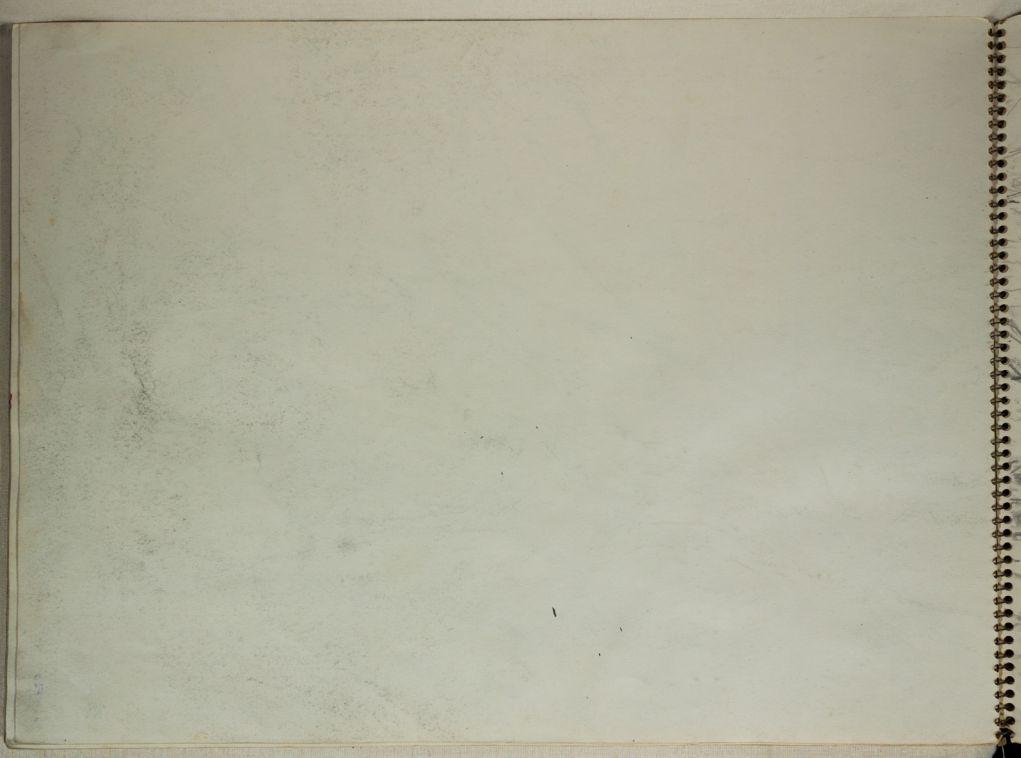




"SUNY CREEK BED"  
0115-1976

JK

226





BSE

10th Party near the road in  
a landscape with a fence

BSE

BB

SUNFLOWER TIME

2.15.1979

